



# **PICTORIAL BREED STANDARD**

## Typical Ram

**Long with straight top line, deep body with a good spring of ribs.  
Mature Weight between 110-120 kilograms.**



# Rams



# Typical Ewe

**Showing good length, Depth & Width  
Feminine Type  
Great balance on her legs  
Mature Weight should be between 70-80 kilograms**



# Ewes



## Heads



**Rams - masculine with good breadth and depth**

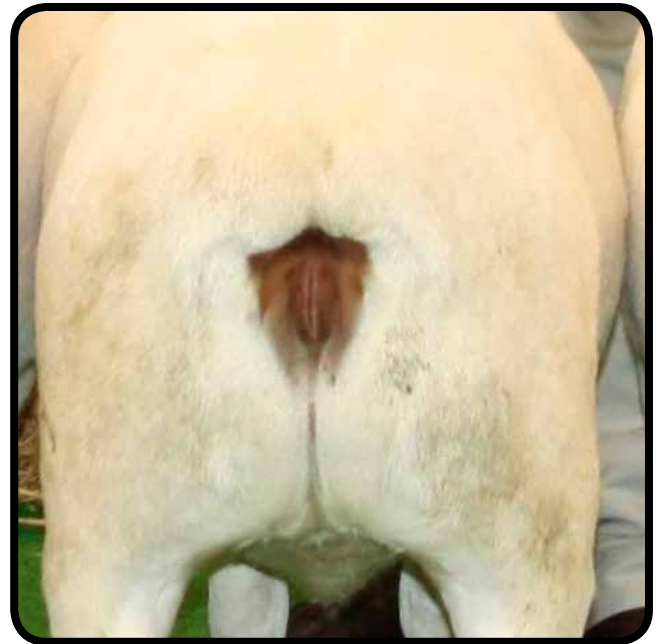


**Ewes - more feminine and finer in proportions**

# Pigment



Heads



Rumps



Feet



**Testicals - Well Developed  
Even and do not hang too low**

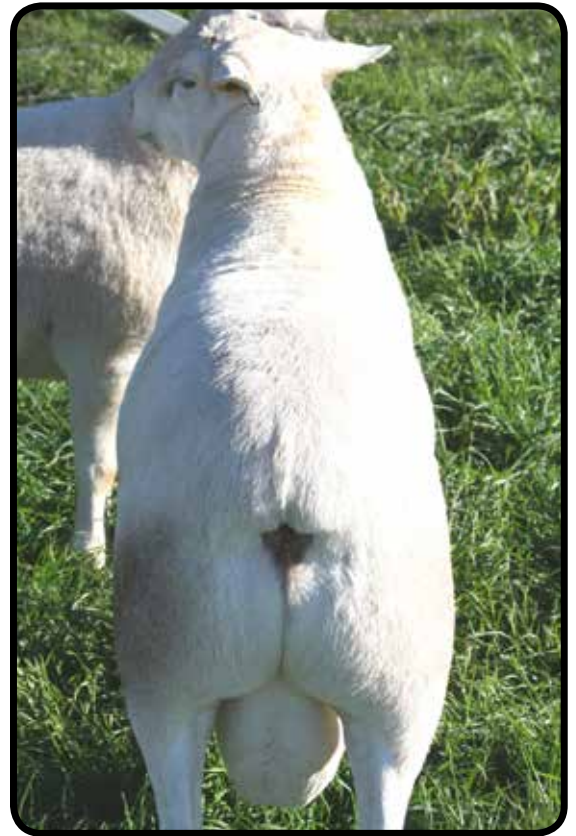


**Hind legs placed outside  
front legs.**



**Pasterns - strong with not too  
much angle.**





**Beam Shape**  
**Slightly narrower in the shoulder than the rump.**



**Good twist in hind legs**



**Muscle carrying well down to  
the hock**

# Typical Shedding Pattern

Hair is thick in the winter months,  
finer in summer after shedding.  
(Skin is thick)



## Body Shape

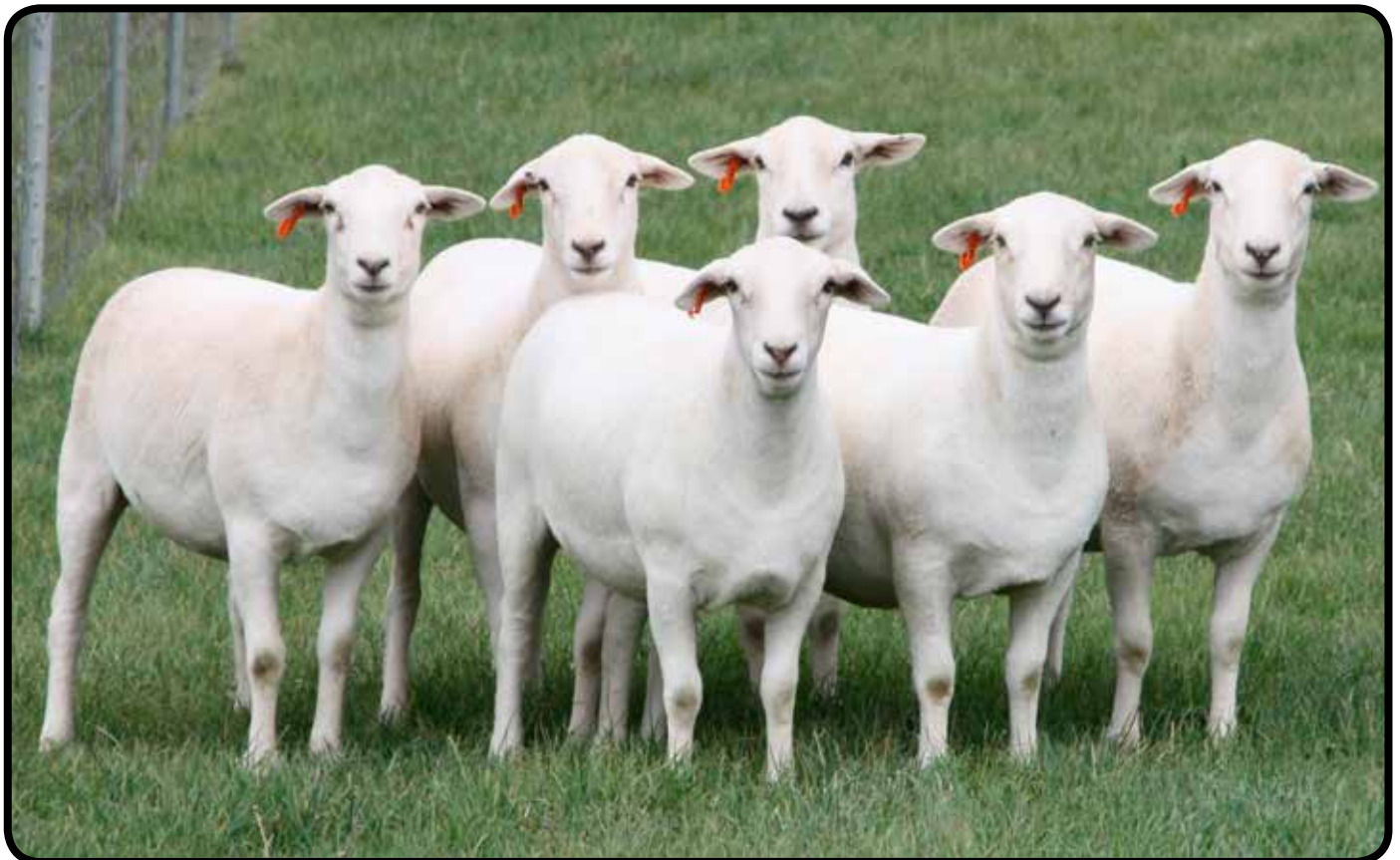


8 month old groups  
Early growth up to 80 kilograms for rams





**6 Month Old Rams**



**11 Month Old Ewes**